

BIOCOMPAL Project: Structural Bio-based Lightweight Composites for Transport Industrial Applications

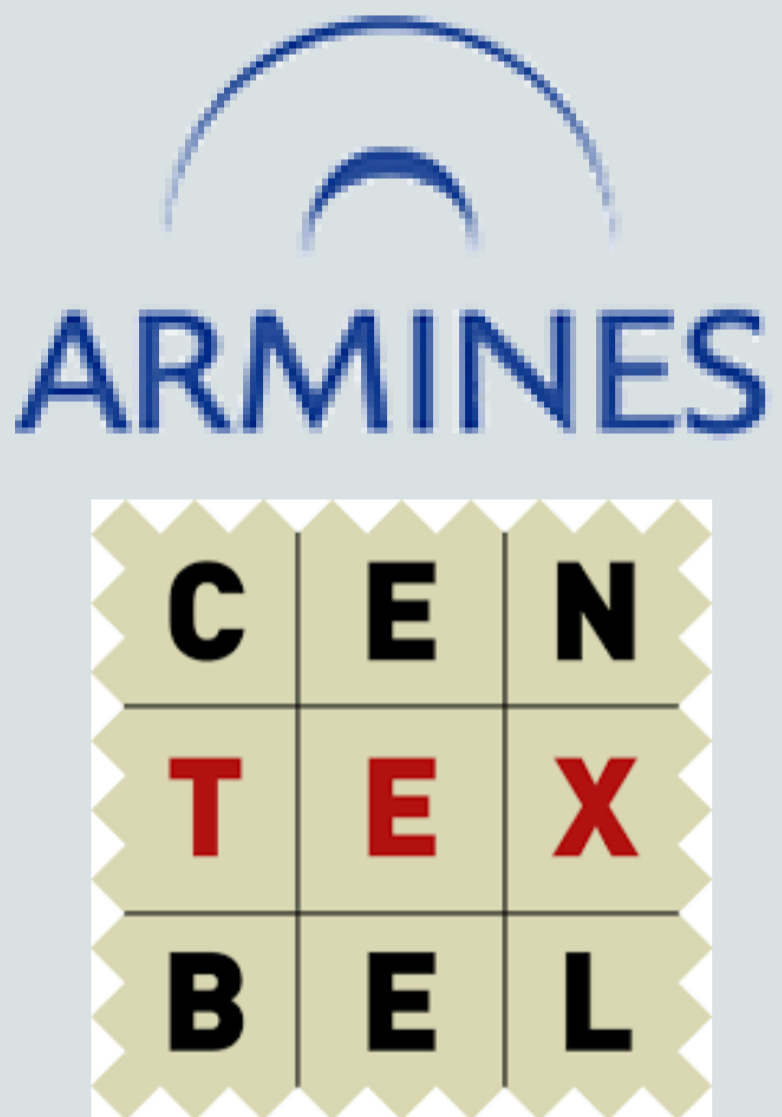
GoToS3

BIOCOMPAL

Project Leader



Partners



Contacts

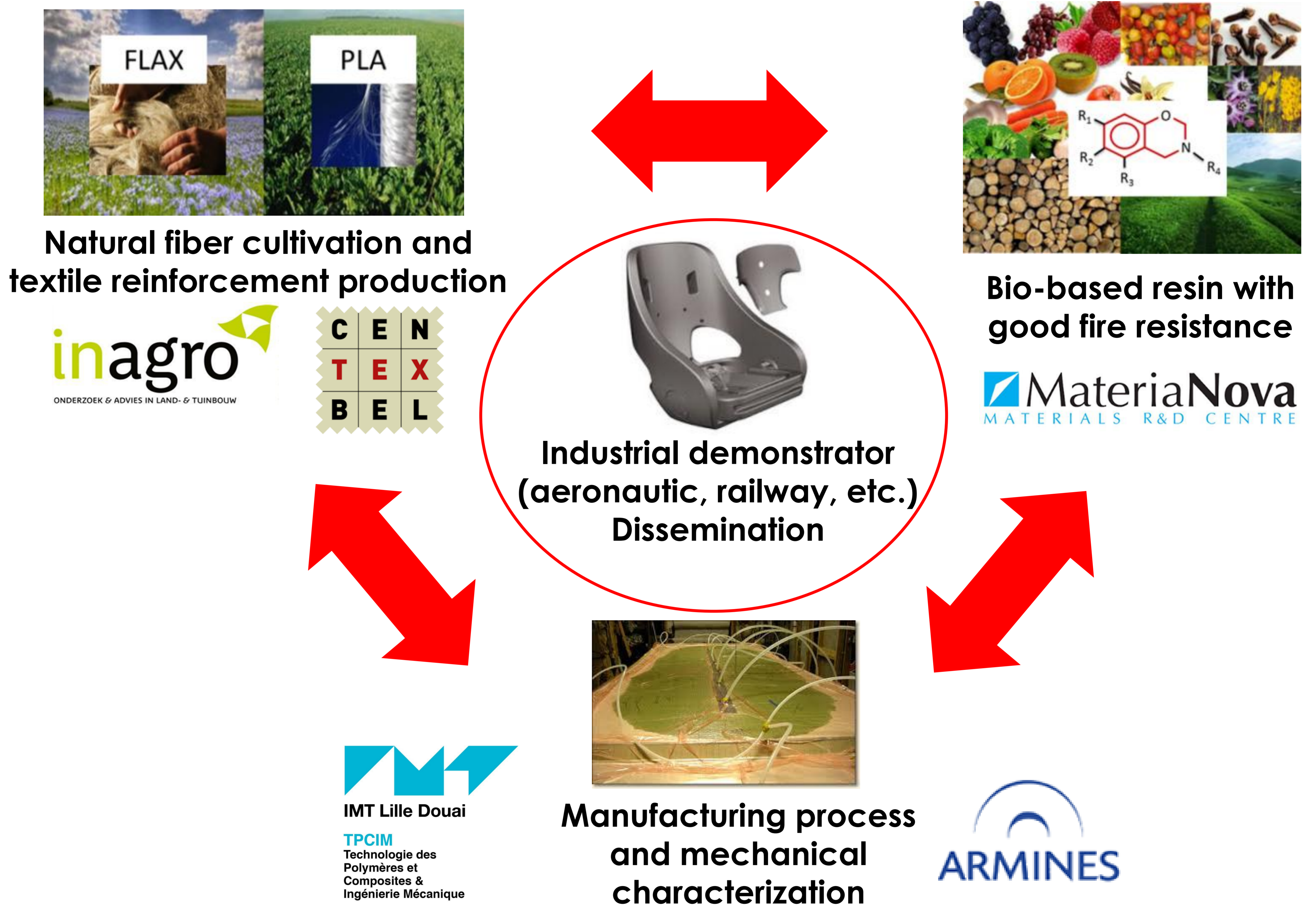
Dr. BONNAUD, Leila
leila.bonnaud@materianov
a.be
+32 (0)65 55 49 75

MATERIA NOVA
Av Nicolas Copernic, 1
B-7000 MONS, BELGIUM
www.materianova.be

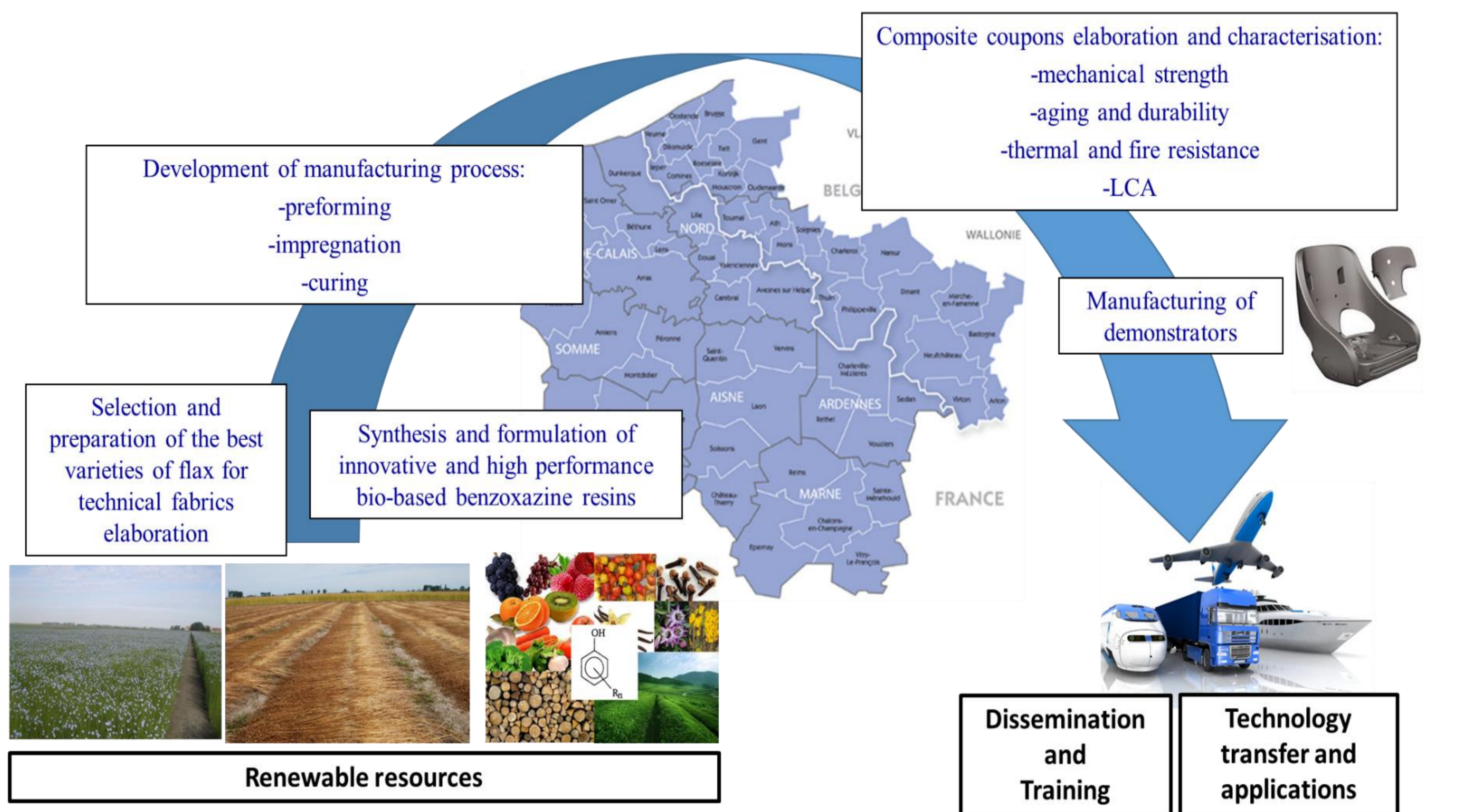
Prof. PARK, Chung-Hae
chung-hae.park@imt-lille-
douai.fr
+33 (0)3 27 71 21 87

TPCIM Department
tpcim.mines-douai.fr
Youtu.be/cZxFz1WiTK8

**IMT Lille Douai, Site de
Douai**
941, rue Charles Bourseul
59508 DOUAI, FRANCE
www.imt-lille-douai.fr



Integrated approach: from crop production to industrial application



www.interreg-fwvl.eu
@InterregFWVL

Co-fundings

FEDER FUNDING: 1 030 426 € - TOTAL COST: 1 873 502 €

With the Support of the European Funds for Regional Development

